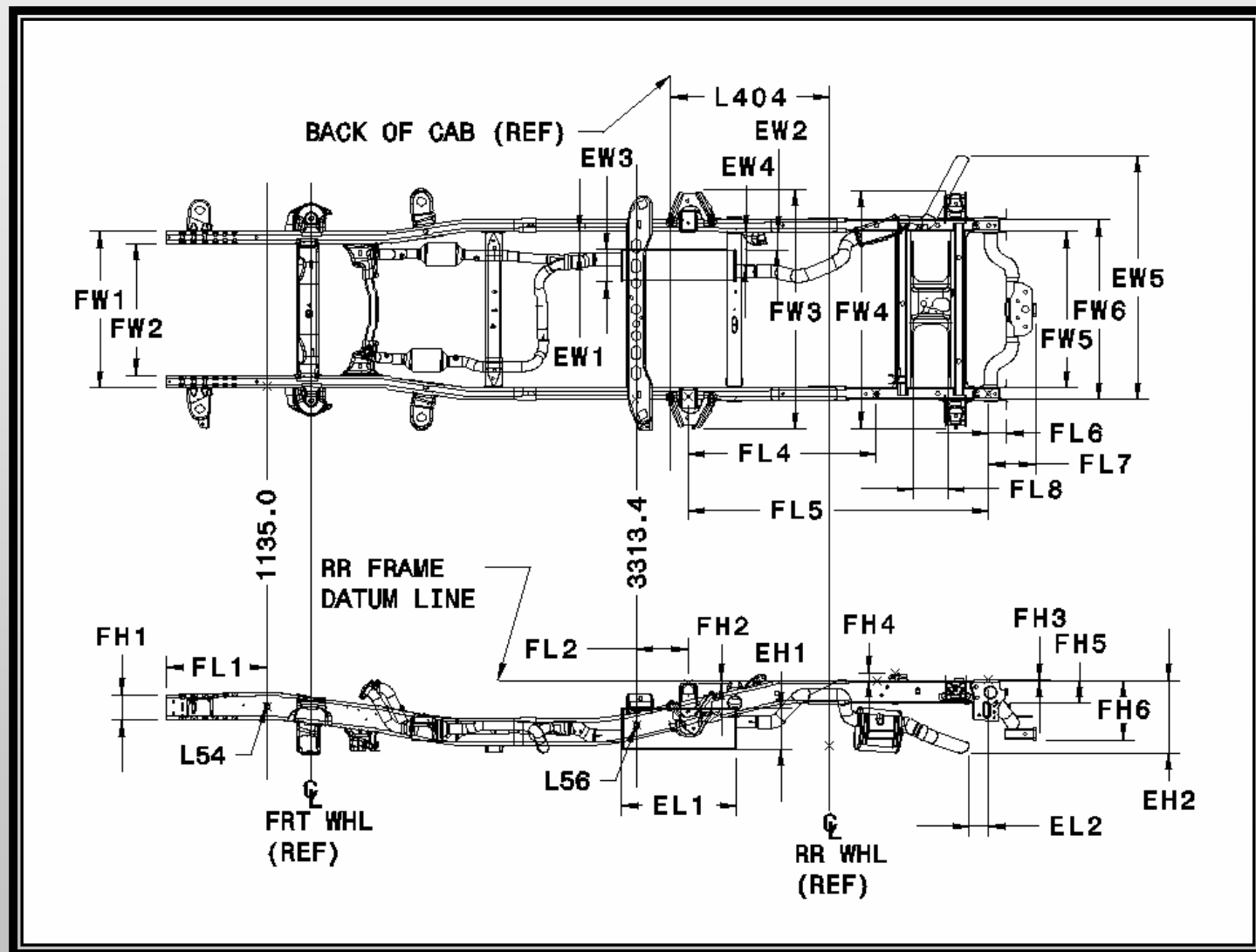


REGULAR CAB 1500 120.5"WB 4x2 5.7L

POSITION THE MOUSE OVER THE CODE FOR INSTANT DIMENSION



CHARTS

[Site Map](#)

[Main Menu](#)

[Ram Home](#)

[PRINT](#)

[ALL](#)

[IN](#)

[OUT](#)

REGULAR CAB 1500 120.5"WB 4x2 5.7L

Code	2005 RAM 120.5 WB 1500 FRAME 4X2 REG CAB	mm	in
FH1	Front Frame - Height	147.0	5.8
FH2	Datum Line to Top of Box Mnt Holes Front	15.7	0.6
FH3	Datum Line to Top of Box Mnt Holes Rear	3.7	0.1
FH4	Datum Line to Shock Mnt RR Inb	48.5	1.9
FH5	Rear Frame - Height	132.2	5.2
FH6	Top Rear Frame to Bottom of Trailer Hitch	351.3	13.8
FL1	Front of Frame to Fiducial Mark No.1	590.0	23.2
FL2	Fiducial Mark No.3 to Front Box Mnt Holes	306.8	12.1
FL4	Front Box Mnt Holes to 3rd Box Mnt Holes	1109.7	43.7
FL5	Front Box Mnt Holes to 4th Box Mnt Holes	1770.3	69.7
FL6	Last Box Mnt Hole to End Trailer Hitch Mnt	107.5	4.2
FL7	Last Box Mnt Hole to End of Trailer Hitch	277.7	10.9
FL8	Distance Between Spare Tire Cross Members	202.7	8.0
FW1	Front Frame - Outside Width	920.0	36.2
FW2	Front Frame - Inside Width	780.0	30.7
FW3	Rear Suspension Front Spring Bolt	1413.1	55.6
FW4	Rear Suspension Rear Spring Bolt	1401.4	55.2
FW5	Rear Frame - Inside Width	922.0	36.3
FW6	Rear Frame - Outside Width	1062.0	41.8
L54	Fiducial Mark No.1	1135.0	44.7
L56	Fiducial Mark No.3	3313.4	130.4
L404	Cab to Rear Axle	937.4	36.9

Code	2005 RAM 120.5 WB 5.7L EXHAUST 4X2 REG CAB	mm	in
EH1	Muffler Height	239.7	9.4
EH2	Datum Line to Bottom of Tailpipe	424.7	16.7
EL1	Muffler Length	678.1	26.7
EL2	End of Tailpipe to Last Box Mnt Hole	115.1	4.5
EW1	Muffler Exhaust Intake to Inside of Frame	130.3	5.1
EW2	Muffler to Inside of Frame	104.9	4.1
EW3	Muffler Width	188.9	7.4
EW4	Muffler RR Exhaust Pipe to Frame	198.1	7.8
EW5	End of Exhaust Pipe to Outside of Frame	1436.0	56.5



VIEWS

[Site Map](#)

[Main Menu](#)

[Ram Home](#)

PRINT

